

# NEW Vantage Plus LED Digital Ophthalmoscope

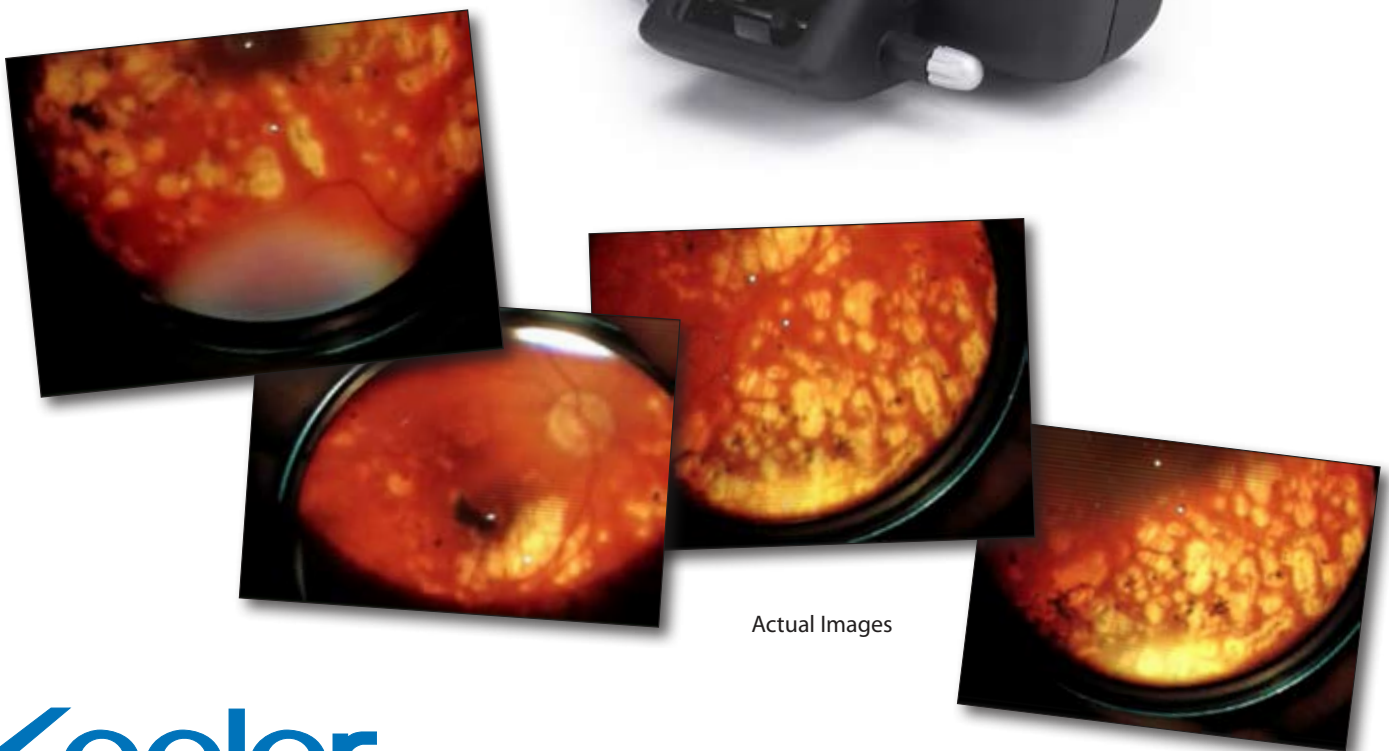
Digital Imaging in your office, operating room, or  
anywhere you want it.

As the world leader in binocular indirect technology we lead the way again with the first digital binocular indirect system. Not old analog video but true digital imaging.

Utilize Vantage Plus LED Digital Wireless in your office, operating room, and teaching facility or anywhere you want to capture digital images.

The intuitive and powerful Keeler Software allows you use your laptop or any usb interface to optimize the examination, provide still or dynamic images, which aid in the documentation and diagnosis of your patient.

Increase your practice profile by educating your patients and their family with digital dynamic imaging in your office.



Actual Images

# Keeler



VANTAGE<sup>LED</sup>  
PLUS  
digital

<b>USB interface</b>	Plugs into any laptop or computer system and examinations are recorded in digital format.
<b>Keeler Software</b>	For easy Still or Dynamic Imaging, Storage, and Documentation.
<b>Vantage Plus LED Slimline Wireless</b>	Built on the number one selling LED and wireless slimline system.
<b>Part Numbers</b>	1205-P-5010 Vantage Plus LED Digital Wireless Ophthalmoscope System.
<b>Includes:</b>	Vantage Plus LED Digital Wireless Ophthalmoscope Docking Station and power supply, additional Slimline Polymer battery, Keeler Software, Digital Wireless Remote Control, and Carrying Case.
<b>Accessory:</b>	1205-P-7001 Optional Vantage Plus LED Digital Footswitch.

## Technical Specifications

### Camera

<b>Interface</b>	USB 2. mini B
<b>Supply</b>	Taken from USB 2 Interface
<b>Resolution</b>	To test pattern 6 of group 2 on the 1951 USAF TEST PATTERN (conforms to MIL-STD 150A standard), when used in combination with a 20D lens
<b>Driver</b>	When installed will work with any video package capable of receiving video input from a USB source
<b>Lead</b>	To connect camera to a PC, Keeler recommends a 5m long USB 2.0A to a mini 5 pin (sometimes packaged as a USB 2.0A to a mini B lead)

### Convergence

<b>Range</b>	The camera can be adjusted $\pm 7$ degrees
--------------	--

### Working distance

<b>Range</b>	The resolution value given above will be maintained at 450mm $\pm 50$ mm distance from instrument to the eye under examination with a 20D lens.
--------------	---

### Vantage Plus

<b>Controls</b>	All controls and features of the Vantage Plus have been maintained
-----------------	--

### Adjustment

<b>Vertical adjustment</b>	The vertical adjustment is achieved by rotating the adjustment screw on the mirror holder. The image should be adjusted such that the light patch is in the centre
----------------------------	--

<b>Horizontal adjustment</b>	Factory set
------------------------------	-------------

<b>Focus</b>	See working distance
--------------	----------------------

### Physical Size

The Vantage Plus Digital is approx 50mm longer than the standard Vantage Plus.

<b>Weight</b>	The total weight of the complete Vantage Plus Digital is 662g (Vantage Plus is 596g)
---------------	--

*Note: The distance and range will vary differing refractive errors of the user. To maximize performance of this product, the user should use refractive error correction aids and adopt a working distance of around 450mm (front of instrument to eye under test) when used with a 20D lens.*